

Product Review

by Adrian Gayler

XP Deus II



Fig.1. The Deus II revolution.

"The French XP revolution continues." Words from the late 'Norfolk Wolf' (John Lynn) way back in 2010 on his first field test of the XP Deus for *Treasure Hunting* magazine. Over 12 years ago, XP launched their all-new lightweight and fully wireless metal detector – at the time it was indeed a revolution in the world of detecting. I remember having one briefly back then and was blown away by the ergonomics and how lightweight the machine actually was. Sadly, at the time, I could not justify the price tag and had to hand it back to my friend after a few weeks of use.

However, time has moved on and a new rejuvenated Deus, the Deus II, has arrived (Fig.1). In early December, I was fortunate to receive the Deus

II from Region. To say I was looking forward to this machine would be an understatement, not only was it nearly Christmas, but I would also be having plenty of time in the holidays to go detecting and try it out.

First Glimpse

Upon opening the box (Fig.2), the compactness of the Deus II hand grip and shaft is immediately noticeable and jumps right out at you. It is very similar to the original Deus, with a

slightly different and improved hand-grip pattern, but the aluminium and plastic shaft and cam locks are the same. I cannot ever recall anyone complaining about the original Deus shaft design, so if it's not broken, as they say, why fix it?

The coil supplied was the new 22.5cm / 9-inch fast multi-frequency coil (FMF) with coil protector and still retains the original clip design for charging. Some may have liked to see this changed, but I have never had an issue with this design. With the new Deus II being multi-frequency, you can only use the new FMF coils from XP, as any existing HF or X35 will not be compatible which is understandable.

Headphones

Now, this is where the Deus II starts to change. I began to unwrap the new WS6 headphones (Fig.3) from the packaging and was immediately pleased to see the increase in the size of the backlit LCD screen and see that there are now four buttons as opposed to three on the original WS4 / WS5 headphones. The slight increase in screen size



Fig.2. Unboxing contents of the Deus II.



Fig.3. The new WS6 headphones.



Fig.4. A much bigger screen makes it easier to see your programmes and settings.



Fig.5. The new BH-01 bone-conduction headphones.

Fig.7. The Deus diving configuration with bone-conduction headphones.



enabled more extensive graphics and was also easier for me to see what I am doing without glasses (Fig.4). The headphones take three hours to charge and the battery life using the General programme is 15 hours. These headphones can only be used with the Deus II and not with any previous versions, only connect to the MI-6 pinpointer and are not waterproof.

However, this brings me to the BH-01 bone-conduction headphones (Fig.5) which are available as an optional extra. If you are looking at diving or have impaired hearing, these will tick your box for sure. Using vibrations from the tones of the detector, these are transferred from your cheekbone to your inner ear. They are not worn in your ear, but rest on the top of your cheekbone. They use the same back phone design as the original XP headphones and are pretty unique. Not being wireless, they connect via the charging port on the underside of the



Fig.6. Plastic plug on underside of control box.

control box (same socket used now for charging the Deus II) after unscrewing the black plastic plug (Fig.6).

Being winter, I naturally didn't fancy taking a dip in my local river or sea to test these, but did try them out in my bath (Fig.7), much to my daughter's surprise. She knows I love detecting but seeing me come out of the bathroom with just a towel and a metal detector.... I had a lot of explaining to do! However, I did get to hear the tones underwater, which were very clear and worked a treat – they are not only for underwater as they can happily be used in the field. I am looking forward to giving these a real go in the summer.

I did set up the Deus II for full underwater mode, as shown in the picture, which, to be fair, did look complicated when reading the instructions but only took a few minutes. To ensure you have a perfect signal when diving (Fig.8), you need to add the aerial antenna extension cable from the coil to the remote. All the fittings were exceptionally well-engineered and clipped together perfectly.

The Deus II Remote

Now on to the crème de la crème of the Deus II in my eyes – the remote control. Sitting in its leather hip mount case, I immediately saw a considerable improvement on the original Deus (Fig.9). To say this felt rugged is an understatement – in your hand, the new Deus II remote feels almost as if it has been designed for military use. The black rubber surround and stainless steel Torx screws look like this has been built to last. IP68 rated to withstand up to 20m underwater (after changing the grey plug to the red one) and being shockproof, it felt like a quality piece of kit.

Upon turning on the remote, the keys straight away needed less pressure and fitted perfectly around my thumb. Once the remote has connected to your coil, you are shown four options to receive the sound:

1. Wireless headphones (WS6)
2. External speaker
3. Bone-conduction headphones
4. Wired headphones.

When selecting the wireless headphones option, your wireless headphones are automatically turned on, and when you turn the remote off, the headphones go off. A nice touch from XP as this is not an easy thing to do with muddy gloves on. I loved this handy aspect when out in the field.

XP Fast Multi-Frequency

What I find interesting about XP is that they are true innovators in the hobby. However, even though they were the first to have a wireless ultra-lightweight detector, they were not the first to have a multi-frequency machine. Now the Deus II brings this to the table (amongst many other new features) as the world's first wireless multi-frequency machine (Fig.10 & 11).

So I hear you ask, what is the difference between a multi-frequency machine from XP and any other manufacturer? This is something I, too, am intrigued to find out. The Deus II now has a range of frequencies used simultaneously from 4 kHz to 45 kHz,

enabling you to cover the entire spectrum when detecting.

Deus II Programmes

Unlike the original Deus, which came with 10 programmes, the Deus II has 12 factory pre-set programmes and 12 user slots (13-24). The increase is mainly for the underwater and additional beach programmes. In the short time I have had the Deus II, I have managed to go through most of these, but have yet to fully explore each one, which I will follow up on in a future article as I learn the machine thoroughly. No doubt the 'DEUS II Killer' programme or suchlike will appear on social media and forums soon. My favourite programme from Gary Blackwell, the 'Sonar programme', currently only works in the single frequency setting on the machine. Like many other programmes, I understand Gary



Fig.8. Deus II coil amplifier in place.

has yet to make a few 'tweaks' for this to work with the new fast multi-frequency.

I found that I could increase the Deus II's sensitivity more than the original Deus. Normally I would run



Fig.10. The XP Fast Multi-Frequency benefits.



Fig.9. Ready for battle – the Deus II remote.

Fig.11. A nice clean Deus II all set for the freshly ploughed fields.





Fig.12. The new bottle cap rejection settings.



Fig.13. The original PWM XP harmonics sound option.



Fig.14. The new square harmonics sound option.

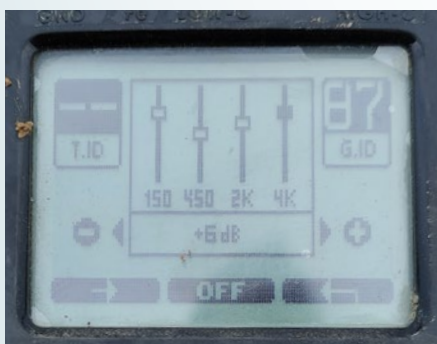


Fig.15. DJ time with the Deus II Equalizer.

at 92-93, but the Deus II had no problems running at 95-96 nearly all the time without any issues.

Being multi-frequency, I was expecting EMI interference which is a familiar aspect with this type of machine that I have had in the past. However, I only had this occur once when close to another detector with similar technology. A quick frequency shift on the machine resolved this instantly. I used the Deus II with my detecting buddy alongside four other machines, both multi and single frequency machines and only one gave me cause to make this change. A very good sign, especially when on club digs or detecting close to others, the Deus II will hopefully remain nice and stable.

Programme 1: GENERAL FMF Maximum Frequency 40 kHz

The 'GENERAL' programme uses both the low and high frequencies, and I found gave an excellent assessment of targets. XP claim it is suited to both beginners and experienced users alike. It offers an ideal target / false signal ratio in the ground, as it is very clever in rejecting the moisture in the soil. This, as we all know, can cause halos and false tones when passing over holes you have dug, for example. So you will have more confidence in digging those deeper targets. I ran this without any tweaks straight out of the box and was very impressed with the stability and iron separation on the standard settings. When things got a little noisy, I changed the reactivity from the standard 2.5 to 3 and applied the silencer setting to 3. Although not getting much depth which I never do on this iron infested area, the Deus II was picking out small targets perfectly.

Programme 2: SENSITIVE FMF Maximum Frequency 40 kHz

The 'SENSITIVE' programme utilises the XP Fast Multi Frequencies up to 40 kHz. It is highly efficient on all targets and very effective in mineralised and contaminated ground when searching for the smallest of targets. A very narrow notch zone is activated with frequencies 23 to 25. I had a play with the reactivity settings on this

programme, changing it from 2 to 3 in mineralised ground, which worked exceptionally well.

Programme 3: SENSI FT FMF Maximum Frequency 40 kHz

The 'SENSITIVE FULL TONES' programme is based on the same platform as programme 2 – 'SENSITIVE', but it is configured with Full Tone audio mode, with reactivity at 3 instead of 2.5. I found it offered a rich and informative sound identification, ideally suited to the more experienced user, with each target ID generated having different tones in proportion to conductivity. I found this ideal in highly ferrous contaminated and mineralised ground, very similar to the original 'Hot' programme on the Deus.

Programme 4: FAST FMF Maximum frequency 40 kHz

The 'FAST' programme is also based on the same platform as the 'SENSITIVE' programme, but the audio is set to Pitch mode with reactivity at 3 instead of 2.5 and uses the square audio feature. These three settings allowed the Deus II to work fast in ferrous-polluted and mineralised ground.

Programme 5: PARK FMF Maximum frequency 24 kHz

The 'PARK' programme, as it states, is designed to search recreational areas such as parks, dry sand beaches and heavily contaminated sites. Unfortunately, I have no permissions to detect on parks, like many of us, so I did try this on semi-dry sand and adjusted the notch feature between 25-35 to reject foil and ring pulls. I also had a play with the BOTTLE CAP feature (on all programmes except 7/8/9) and, after adjusting the rejection to 4, found this worked exceptionally well on the beach (Fig.12).

Programme 6: DEEP HC FMF Maximum Frequency 14 kHz

The 'DEEP HIGH CONDUCTOR' programme adds both the very low and medium frequencies up to 14 kHz. Therefore, a programme designed to locate good conductivity targets and is ideal for clusters of coins whilst maintaining excellent sensitivity to isolated coins using its 14 kHz frequency.

**Programme 7: DEUS MONO
MONOFREQUENCY – Adjustable
from 4 to 45 kHz**

The 'DEUS MONO' programme works on a single frequency like the original Deus, but combines the advantages of the Deus II, such as its expanded frequency range up to 45 kHz. I did detect with this programme and adjusted the frequencies with no issues – the machine felt very much like the original Deus but seemed a little less chattery.

**Programme 8: GOLDFIELD FMF
Maximum Frequency 40 kHz**

The 'GOLDFIELD' programme is for highly-mineralised gold-bearing ground (sadly I have none near me). The Deus II is set to All-Metal for deeper detection in this programme and only rejects the localised ground, which you should regularly adjust by 'Grabbing' – I'll come back to this later.

**Programme 9: RELIC FMF
Maximum Frequency 24 kHz**

The 'RELIC' programme is processed in the same way as the 'GOLDFIELD' programme, but uses lower subtracted frequencies to search for large masses. It is configured for 'all-metal' with low reactivity and only rejects the localised ground, to which you should regularly adjust by 'Grabbing'. It will then accept ground above and below this ground setting.

**Programme 10: DIVING FMF
Maximum frequency 14 kHz**

The 'DIVING' programme is the first and most stable of three Deus II programmes intended to be used submerged in saltwater environments or on wet sand. Its low and medium subtracted frequencies will better locate rings and coins while naturally less responsive to low conductive targets like aluminium foil than the more sensitive 'BEACH' programmes.

This was my preferred programme on the beach based on the conditions when I was testing the Deus II – it produced very little chatter and was a joy to use. The depth was impressive, I was digging 8-10 inches with no problem on small lead fragments and ring pulls.

**Programme 11: BEACH FMF
Maximum frequency 24 kHz**

The 'BEACH' programme uses higher frequencies up to 24 kHz and thus is more sensitive to small targets than 'DIVING'. It is still well suited to wet zones – I did manage to get a depth of 10 inches with my wedding ring in the bath, carrying out a very technical water depth test which I thought, although not an actual test, was very impressive.

**Programme 12: BEACH SENS FMF
Maximum frequency 40 kHz**

The 'BEACH SENS' programme incorporates frequencies up to 40 kHz offering excellent sensitivity to the smallest targets without losing performance on bigger targets. This is the deepest beach programme for wet conditions and the most reactive. At first, I found it a little chattery, even after dropping the Salt sensitivity, playing with the reactivity, and ensuring the coil was parallel. Still, I did manage to find the sweet spot for this programme based on the conditions after a short time.

First Day Out

Although I was excited to get out in the field, most of my permissions were either seeded or deep ploughed, so frustratingly this was perhaps not the best time to receive a new machine to



Fig.16. First day out and a hammered!



Fig.17. A very wet and muddy remote after a day detecting.

Fig.18. An old Roman spring testing the waterproofing of the Deus II.





Fig.19. Testing out the Deus II on wet sand, on which it did well.



Fig.20. No problems with the coil submersed in saltwater.

test out. However, as luck would have it, my father-in-law contacted me to say a local farmer he knew would like to meet up with me to discuss searching his land. So, armed with a copy of *Treasure Hunting* magazine, a search agreement, and a mini portfolio of finds that I had printed off, I headed out to meet him.

After an initial chat, the permission was granted, and with the Deus II charged, I headed off to my new permission the very next day, accompanied by my detecting buddy James. A misty and cold day with very wet ground, I headed off into the field with the Deus II. I knew this lovely clean machine would not fare well in keeping the mud off, but at least there's no need for a waterproof cover with this new machine. So, selecting Programme 1, 'GENERAL', and with the automatic ground balance done by the machine, I was off.

You have three choices for ground balancing the Deus II: Grab (automatic), Manual and Tracking. Manual is for the mono-only programme and tracking does as it says, continually checking the ground conditions and is more suitable for uniform conditions.

I began detecting whilst looking at the great configuration of the new backlit screen layout. Everything is clear, well laid out, easily navigable and even more easily adjustable with the new keys.

After a few minutes, I tested out

the new 'SQUARE' audio option. The Deus II comes with the standard 'PWM', which is the same as the original Deus, but now with an additional much softer and fluffy 'SQUARE' audio. I am very used to the 'PWM' harmonics (Fig.13) but must admit the new 'SQUARE' audio (Fig.14) was nice and clear to the ear. I did worry I was missing targets with this new audio, but that was probably more psychological because it was new to me and I suspect this is something that I will learn over time as I get to know the machine and its capabilities.

I just had to play with the new 4 band equaliser which allows you to adjust the speaker's acoustics in both 'PWM' and 'SQUARE' to find the best sound for your hearing. It reminded me of back in the '80s when someone fitted one to their Fiesta, friends and I would spend hours finding just the correct settings. Unlike graphic equalisers back then, which seldom got adjusted after the gimmick had died down, this will be a very neat addition to customise one's programmes going forward (Fig.15).

XP seem very focused on the audio options and modes, which we all know they are experts at, based on their previous history. I also understand future software upgrades will elaborate on this to help you make that dig / no-dig decision. After finding a setting I felt comfortable with, I headed to the middle of the field which had a footpath

somewhere across it – it had recently been ploughed, so the exact location was hard to find.

First Hammered with the Deus II

Using the 'SENSI FT' mode (like the hot programme on the old Deus) I started swinging the compact 9-inch FMF coil. After a short while, I had a banging tone using the 'SQUARE' audio. With a solid VDI reading of 38 I used the pinpoint function on the machine (which I have to say I found very accurate) and sunk my spade into the toffee type soil. Lifting the gloopy clay plug from the ground, I used my MI-6 pinpointer to locate the target. Around five inches down from the plug, there it was, my first hammered with the Deus II had appeared on the very first outing (Fig.16). I shouted over to James, who by now had looked like he had gone through the set of Willy Wonka ten times and had not had much luck all day. "Hammered!" I shouted with a wry smile. Okay, it was a bit bent and twisted but still a hammered.

One thing that did panic me on that first day was when I somehow managed to lock the Deus II screen. Thinking I had messed up a day's detecting, I finally realised that I had somehow put the remote in 'Diving' mode. This shows 3 padlocks on the bottom of the screen and is designed to lock the Deus II underwater. After around 10 minutes, I fathomed how to



Fig.21. Found on New Year's Day, a 100-year-old sixpence to celebrate 2022!



Fig.22. A nice Celtic coin found at around nine inches using the 'GENERAL' setting on the Deus II.

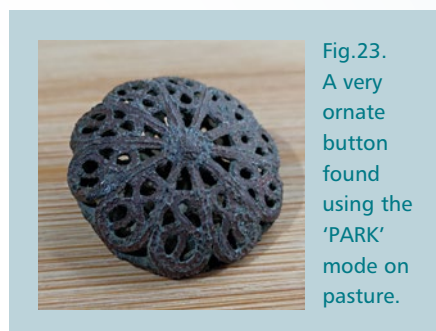


Fig.23. A very ornate button found using the 'PARK' mode on pasture.



Fig.24. Broken crotal bell found at ten inches in 'GENERAL' mode.

unlock it by pressing each of the 'up' arrows, starting from left to right. This was later confirmed after a post online from Gary Blackwell, as I could not find it in the handbook.

As the day continued, the Deus II (which is a smidge heavier than the original Deus) was a joy to hold and the new style grip did feel as though it gave me a little more grip in the muddy wet boggy field (Figs.17 & 18). Of course, this could have been just because it was new, but it did remind me why people choose the Deus range over more traditional machines, you really could detect with it all day long. I spent a total of eight hours that day with no problem at all thanks to its light and ergonomic design. I had dug many holes by the end of the day, like I would with any new machine, and had a lot of trash and small and large pieces of lead and iron.

The one thing that became apparent was the consistency of the visual display numbers (0-99) when locating a target at depth. They seemed more consistent and static with the new fast multi-frequency and did not jump around. I found this was also the case when using the Deus II in a single frequency. As for depth, this was hard to determine with the saturated and heavily iron infested ground areas that day, but I did feel it was holding its ground exceptionally well based on these difficult conditions.

I am not comparing the Deus II to any other machines as this will no doubt start a massive debate with everyone, which I will leave to those brave souls on YouTube and alike. Only time

will tell. At the end of the day, when I sorted through my finds and separated the good and bad, I felt the Deus II did extremely well on this land, which had been previously detected by others.

Further Days Out with the Deus II

Over the Christmas period, whilst writing this review, I took the Deus II on the same land again and on several other permissions. I have used it on heavily mineralised ploughed soil, pasture, forest, wet and dry sand (Fig.19) and submerged the coil in the sea (Fig.20). The machine has performed well and has rapid recovery and reactivity speeds as expected for a high range machine. One thing I would say is that I found that the Deus II was excellent on the beach with



Fig.25. My first find with the Deus II – possibly a Victorian furniture piece.

minimal chatter and obtained good depth for a beach detector. This is obviously an area that XP have worked hard on and done a fantastic job. The external speaker I had to use that day (as I forgot to pack the WS6 headphones in my bag) seems a lot louder than the original Deus speaker, which may please some. A small selection of finds made with the Deus II can be seen in Figs.21-25.

Conclusion

As I said previously, I will follow-up with a more detailed second review focusing on the benefits of the Deus II Fast Multi-frequency and features. As for the price of the Deus II, at £1399, some may think it's not cheap, but based on my initial impressions, this could easily be a detector for inland, beach and underwater. So those who might previously have needed two or three machines could combine them into just one with the Deus II, which would represent not only a cost saving but have the additional bonus of only having to understand one machine.

Furthermore, with the many customisation features, software updates and proven history with the original Deus lasting the test of time, as well as a five-year guarantee, I am confident we will see the Deus II go from strength to strength and become as popular, if not more so, than its predecessor. I must say a big thank you to Nigel, Marcus and the teams at Regton and XP for supplying the machine to *Treasure Hunting* magazine for our initial evaluation and very much look forward to sharing the next review.